



National Trends in Disability Employment Lunch & Learn Series

Season 11, Episode 2 nTIDE *Special Session:* *Disability Employment Beyond Traditional Workforce Models*

February 6, 2026, 12:00 – 1:30 pm ET | Free | Online | [Register](#)

Website: researchondisability.org/ntide | Contact: amy.chamberlain@unh.edu

Welcome to the National Trends in Disability Employment (or nTIDE) Lunch & Learn series. On the first Friday of every month, corresponding with the Bureau of Labor Statistics jobs report, we will be offering a live broadcast via Zoom Webinar to share the results of the latest nTIDE findings. In addition, we will provide news and updates from the field of Disability Employment, as well as host an invited panelist who will discuss current disability-related findings and events.

*This is the first **Special Session** this year, offering a more in-depth discussion.*

AGENDA

Time	Item
12:00 PM ET	Introduction & Welcome Andrew Houtenville, University of New Hampshire
12:10 PM	Overview of National Trends in Disability Employment (nTIDE) Jobs Report Release John O'Neill, Kessler Foundation The Numbers Andrew Houtenville, University of New Hampshire
12:40 PM	Announcements from the field of Disability Employment: Lillie Heigl, AUCD
12:55 PM	Guest Presenters: Jillian Curwin and Madison Lawson Q&A with disabled writers, podcasters, and creators, moderated by Lillie Heigl, AUCD
1:15 PM	Question and Answer for Attendees

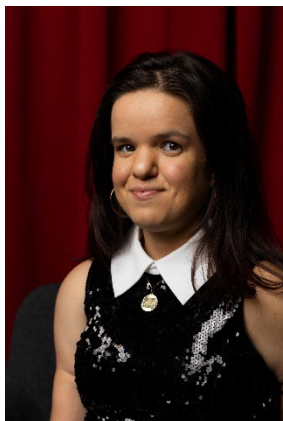
Note. All webinars will be recorded and closed captioned and will be added to our website archives along with full transcripts following the live broadcast.

Twitter: @DisabilityStats | FB: @disabilitystatistics



National Trends in Disability Employment Lunch & Learn Series

PRESENTERS



Jillian Curwin is a writer, content creator, and advocate for dwarfism and disability awareness based in New York City. She has written for *Culxtured* and has collaborated with *Betches Media* and *FEMINIST* to discuss disability representation in fashion, sports, and entertainment along with highlighting current events in the disability space. In addition, she has consulted with brands and organizations in the fashion and fitness spaces about accessibility and inclusion. She is the host of the podcast *Always Looking Up* where she talks to people about living in a world that was not necessarily designed for them and how they are changing it.



Madison Lawson is a journalist, model, and disability rights advocate. Born with a rare form of muscular dystrophy, Madison learned from an early age her greatest obstacle would not be her disease, but would be the misinformed perceptions built around what disability looks like. She decided the only way to correct that narrative was to rewrite it herself. Her work has been featured in publications such as *Vogue*, *Glamour*, *Allure*, and *Teen Vogue*. Her focus has been authentic representation in media and air travel reform, working closely with the Muscular Dystrophy Association (MDA) talking to lawmakers and advocating for a safer more equitable transportation experience for passengers who use wheelchairs. Madison has also worked with brands such as "Olay" developing the first accessible skincare packaging on the market. Fashion and accessible beauty has always had a special place in her heart, as she bonded with who she refers to as "disabled fashion girlies" who she says ignite her fire to advocate for a more equitable world for people with disabilities. Her social media presence has allowed her to feel connected to the disabled community, something she is proud to be a part of and is grateful to get to learn from and grow alongside everyday.



National Trends in Disability Employment Lunch & Learn Series



Andrew Houtenville, PhD, is a Professor of Economics and Research Director of the Institute on Disability at the University of New Hampshire. Dr. Houtenville is extensively involved in disability statistics and employment policy research. He has published widely in the areas of disability statistics and the economic status of people with disabilities. He is the Principal Investigator on the NIDILRR-funded Employment Policy and Measurement Rehabilitation and Research Training Center. Dr. Houtenville received his Ph.D. in Economics from the University of New Hampshire in 1999 & was a National Institute on Aging Post-Doctoral Fellow at Syracuse University in 1998/1999.



John O'Neill, PhD, is the director of employment and disability research at Kessler Foundation and has over 28 years of experience in vocational rehabilitation as a rehabilitation counselor educator, disability employment researcher, and advisor to state vocational rehabilitation agencies. Dr. O'Neill has been a PI or co-PI on six NIDILRR funded, five-year research and training centers focusing on TBI and community integration, disability statistics, disability employment service system, and how individual and contextual factors relate to employment outcomes among people with disabilities.



Lillie Heigl, Esq., MPA, is the Director of Policy at AUCD and is a former New York State Excelsior Public Service fellow, placed at the Office for People with Developmental Disabilities in Albany New York. She worked in program implementation for the agency's Employment & Meaningful Activities unit. She holds a J.D. and an MPA from Syracuse University College of Law and the Maxwell School of Citizenship and Public Affairs, also having completed the Disability Law and Policy Program.

Brought to you by the University of New Hampshire Institute on Disability and the Employment Policy and Measurement Rehabilitation and Research Training Center, funded by the Kessler Foundation.

Twitter: @DisabilityStats | FB: @disabilitystatistics