

Disability Statistics at NCHS: Data and Opportunities

Julie D. Weeks, PhD

Chief, Measures Research & Evaluation



2022 State-of-the-Science on Disability Statistics:
Meeting Emerging Demands for Data

October 6-7, 2022

Washington, DC

Disability Data Resources



National
Health and
Nutrition
Examination
Survey



National
Health
Interview
Survey



National
Health Care
Surveys



National
Survey of
Family
Growth



National Vital
Statistics
System



Data
Linkage
Program

The National Health and Nutrition Examination Survey

Designed to assess the health and nutritional status of the U.S. civilian noninstitutionalized population. The survey is unique in that it combines interviews and physical examinations.

- Annual data collection from \approx 5,000 adults and children
- Redesigned questionnaire fielded in January 2019
- Two-year release cycle
- WG-ES and CFM questions included 2019
- ★ • 2019-March 2020 limited access data available in RDC
- ★ • 2021-2022 data collection now in field

Provides information on persons with disability:

- *Interview* component: demographic, socioeconomic, dietary, health
- *Examination* component: medical, dental, and physiological measurements, as well as laboratory tests
- **Examples:** Hypertension, weight status, cholesterol, drugs/opioids

The National Survey of Family Growth

Provides information on families, fertility, and health, including health services and health education programs

- Continuous data collection design 2022-2029
- Two-year release cycle
- Nationally representative, women & men ages 15-49, \approx 5,000-6,000 each
- ★ • Redesigned questionnaire fielded in January 2022
- WG-SS included 2022
- ★ • 2022-2023 data release in 2024

Provides information on the health status of persons with disability, as well as:

- Demographics, health, health care access and utilization
- Family life, marriage and cohabitation
- Pregnancy, infertility, contraception use, sexual activity
- Births, childlessness

The National Health Interview Survey

The principal source of information on the health of the civilian noninstitutionalized population of the United States since 1957

- Annual data collection from $\approx 30,000$ adults and $\approx 10,000$ children
- Redesigned questionnaire fielded in January 2019
- WG-ES questions included 2009, CFM included 2019
- Disability now part of the Early Release program
- ★ • 2021 data released in July 2022

Provides information on the health status of persons with disability, as well as:

- Demographics
- Health care access and utilization, and insurance
- Health behaviors and risk factors
- Participation (social, work, civic)
- ★ • Allergies, chronic pain and fatigue, injuries, preventive services, occupational health, telehealth and Covid-19

NHIS Publication Releases

NCHS Data Brief ■ No. 431 ■ January 2022

**Stressful Life Events Among Children Aged 5–17 Years by
Disability Status: United States, 2019**

NCHS Data Brief ■ No. 432 ■ February 2022

**Children Living in Households That Experienced Food
Insecurity: United States, 2019–2020**

NCHS Data Brief ■ No. 439 ■ July 2022

**Physical, Speech, Rehabilitative, or Occupational Therapy
Use Among Adults Aged 25–64, by Veteran Status:
United States, 2019–2020**

NCHS Data Brief ■ No. 444 ■ September 2022

**Mental Health Treatment Among Adults Aged 18–44:
United States, 2019–2021**

NCHS Data Linkage Program

Survey Data

Sampling frame
Known inference



Health behaviors



Health conditions



Socioeconomic status



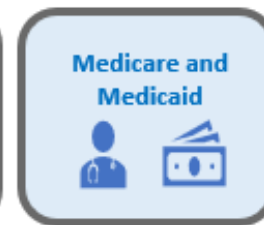
Healthcare access and utilization

Administrative Data

Program participation/vital status
Not meant for research purposes



Housing and Urban Development



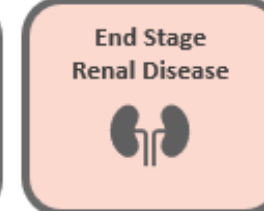
Medicare and Medicaid



Mortality



Geocoded Addresses



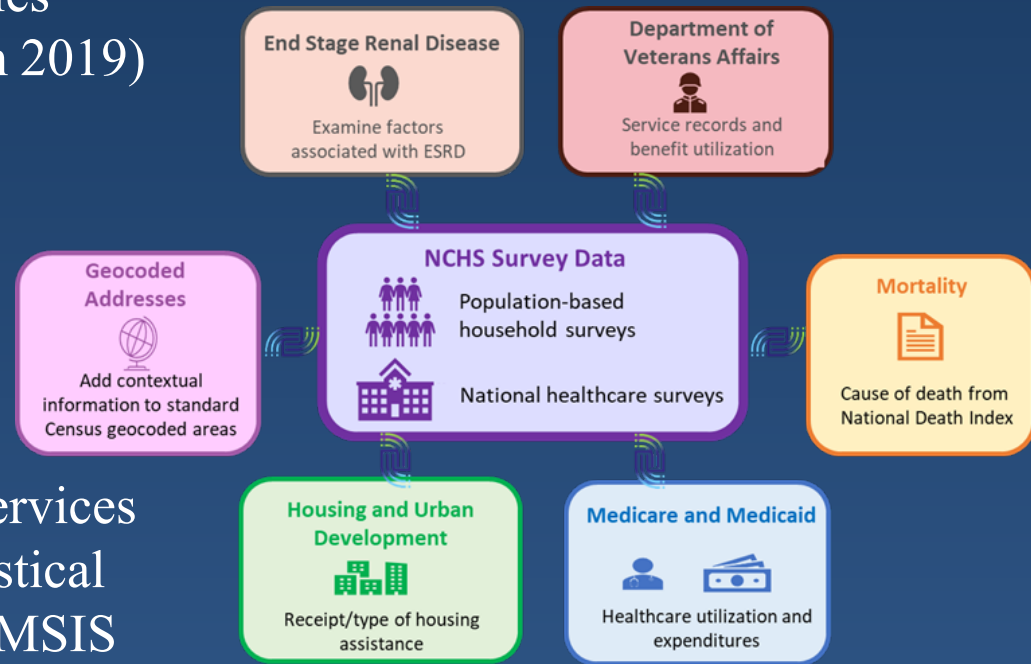
End Stage Renal Disease



Department of Veterans Affairs

Updated and New Linkages

- Mortality data - Linked Mortality Files (NHIS, NHANES, mortality through 2019)
- Department of Housing and Urban Development housing assistance program files (NHIS, NHANES, HUD data through 2019)
- Centers for Medicare & Medicaid Services (CMS), Transformed Medicaid Statistical Information System data (NHCS, T-MSIS data 2015-2017, household surveys with 2014-2019 T-MSIS coming in October)
- Department of Veterans Affairs administrative data (NHIS, NHANES, VA data through 2020)





Anxiety and Depression

Tabulated data will be updated every month. Estimates of the percentage of adults with symptoms of anxiety and depressed mood are available by select sociodemographic characteristics.



Health Insurance Coverage

Tabulated data will be updated every month. Estimates of the percentage of adults aged 18-64 with health insurance coverage (e.g. uninsured, public coverage, private coverage) for adults 18-64 are available by select sociodemographic characteristics.



Telemedicine Use

Tabulated data will be updated every month, involving telemedicine use in the last four weeks among adults and in households with children. Estimates for adults are available by age, sex, race and Hispanic origin, education, and disability status. Estimates for households with children are available by total household income, race and Hispanic origin, employment status, armed forces status, and health insurance of the adult respondent.



Long COVID

Tabulated data will be updated every month. Estimates of the percentage of adults with post-COVID-19 conditions are available by select sociodemographic characteristics.



Functioning and Disability

Tabulated data will be updated every month. Estimates of the percentage of adults with symptoms of an anxiety or depressive disorder, medication use, reduced access to care, telemedicine use, and insurance coverage will be available by disability status and the following demographic characteristics: age, sex, race, and Hispanic origin, and education.

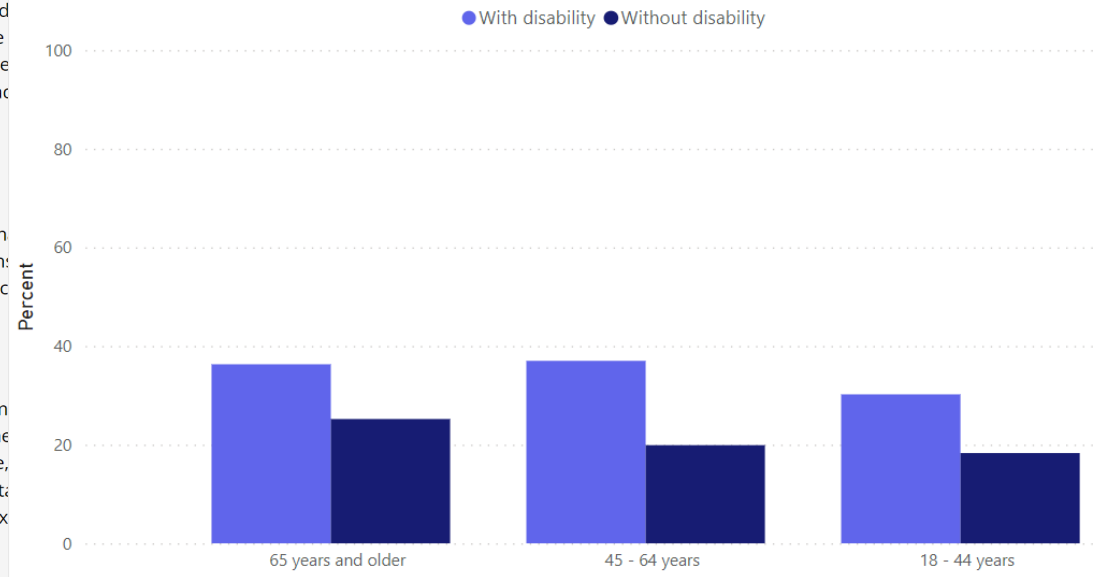


Mental Health Care

Tabulated data include estimates of the percentage of adults who take prescription medication for their mental health, receive counseling or therapy for their mental health, or have unmet mental health care need by select sociodemographic characteristics. Questions were included from Phase 2 through Phase 3.4 of the survey.

Census Household Pulse Survey

Had Appointment with Health Professional Over Video or Phone, Last 4 Weeks



Measures Development & Testing

Domains of functioning:

- Psychosocial functioning
- Participation

Special populations:

- WG/UNICEF Inclusive Education Module
 - In-school and out-of-school populations to assess facilitators and barriers to education
- Intellectual and Developmental Disability
 - Age at onset and learning

Other data collections:

- Web-based surveys
 - RANDS

Resources

Washington Group on Disability Statistics

<http://www.washingtongroup-disability.com/>

National Health Interview Survey

<https://www.cdc.gov/nchs/nhis/index.htm>

National Health and Nutrition Examination Survey

<https://www.cdc.gov/nchs/nhanes/index.htm>

National Survey of Family Growth

<https://www.cdc.gov/nchs/nsfg/index.htm>

NCHS Data Linkage Program

<https://www.cdc.gov/nchs/data-linkage/index.htm>