



# National Trends in Disability Employment Lunch & Learn Series

## Episode 7 nTIDE Update

July 8, 2022 | 12:00 – 1:00 pm ET | Free | Online | [Register](#)

Website: [researchondisability.org/ntide](https://researchondisability.org/ntide) | Contact: [karen.volle@unh.edu](mailto:karen.volle@unh.edu)

Welcome to the National Trends in Disability Employment (or nTIDE) Lunch & Learn series. On the first Friday of every month, corresponding with the Bureau of Labor Statistics jobs report, we will be offering a live broadcast via Zoom Webinar to share the results of the latest nTIDE findings. In addition, we will provide news and updates from the field of Disability Employment, as well as host an invited panelist who will discuss current disability related findings and events.

### AGENDA

Time	Item
12:00 PM ET	Introduction & Welcome Andrew Houtenville, University of New Hampshire
12:10 PM	Overview of National Trends in Disability Employment (nTIDE) Jobs Report Release John O'Neill, Kessler Foundation  The Numbers Andrew Houtenville, University of New Hampshire
12:15 PM	Announcements from the field of Disability Employment Denise Rozell, Director of Policy Innovation, AUCD
12:30 PM	Guest Presenter Dorothy Garcia, Disability:IN
12:45 PM	Question and Answer for Attendees

*Note. All webinars will be recorded and closed captioned and will be added to our website archives along with full transcripts following the live broadcast.*

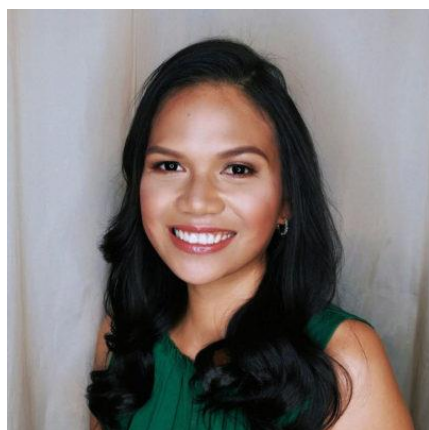
#nTIDElearn

Twitter: @DisabilityStats | FB: @disabilitystatistics



# National Trends in Disability Employment Lunch & Learn Series

## PRESENTERS



**Dorothy Garcia, MPA**, is the Director of the Global Disability Equality Index (GDEI) with Disability:IN. In this role, she is responsible for launching the GDEI pilot and helping to drive Disability:IN's global strategy.

Prior to Disability:IN, Dorothy worked at the Association of University Centers for Disabilities, where she was the program director for the State Department-sponsored Professional Fellows Program on Inclusive Disability Employment. The program's centerpiece was a 5-week fellowship for mid-career professionals from East Africa, who were focused on advancing employment opportunities for people with disabilities. Dorothy was also responsible for planning and executing the

Harkin International Disability Employment Summit, which convenes Fortune 500 companies, policymakers, foundations, academics, and other stakeholders to maximize collective impact around inclusive employment. She has an extensive background in human rights and rule of law issues, having previously managed programs at the World Justice Project, among other internationally-focused NGOs.

Dorothy has a Master's degree in Public Policy and International Development from the University of Maryland. She is a Filipino immigrant and lives in Washington DC with her husband and two children.



**Andrew Houtenville, PhD**, is a Professor of Economics and Research Director of the Institute on Disability at the University of New Hampshire. Dr. Houtenville is extensively involved in disability statistics and employment policy research. He has published widely in the areas of disability statistics and the economic status of people with disabilities. He is the Principal Investigator on the NIDILRR-funded Employment Policy and Measurement Rehabilitation and Research Training Center. Dr. Houtenville received his Ph.D. in Economics from the University of New Hampshire in 1997 and was a National Institute on Aging Post-Doctoral Fellow at Syracuse University in 1998/1999.



# National Trends in Disability Employment Lunch & Learn Series



**John O'Neill, PhD** is the director of employment and disability research at Kessler Foundation and has over 28 years of experience in vocational rehabilitation as a rehabilitation counselor educator, disability employment researcher, and advisor to state vocational rehabilitation agencies. Dr. O'Neill has been a PI or co-PI on six NIDILRR funded, five-year research and training centers focusing on TBI and community integration, disability statistics, disability employment service system, and how individual and contextual factors relate to employment outcomes among people with disabilities.



**Denise M. Rozell, JD** is the Director of Policy Innovation at the AUCD. Prior to joining AUCD, she spent fifteen years as Assistant Vice President for State Government Relations with Easter Seals. Denise was the primary resource to Easter Seals 75 affiliates in building capacity to increase awareness of and support for Easter Seals in state government. Prior to that, Denise was the Executive Director of the Association for Education and Rehabilitation of the Blind and Visually Impaired, an international membership organization for the professionals serving individuals who are blind or visually impaired. Denise holds a bachelor's degree in political science from Occidental College in Los Angeles and a juris doctorate from Boalt Hall School of Law at the University of California in Berkeley.

*Brought to you by the University of New Hampshire Institute on Disability and the Employment Policy and Measurement Rehabilitation and Research Training Center, funded by the Kessler Foundation.*

#nTIDElearn

Twitter: @DisabilityStats | FB: @disabilitystatistics