



Materials and Speaker List

Release of the Annual Disability Statistics Compendium

February 9th—12th (Tuesday through Friday), 2021 | 12 pm - 1:15 pm (ET)

How do I find the materials online?

www.disabilitycompendium.org

Compendium, Supplement, and Annual Report
HTML versions (accessible for screen readers)

Slides from the event
Archived materials from past years

How do I find the speakers?

Photo

Speaker

Biography



Phillip Beatty, PhD

Associate Director

Office of Research Sciences
Administration for Community
Living

NIDILRR | Washington, DC

Phillip.Beatty@acl.hhs.gov

<http://acl.gov>

Phil Beatty is the Director of the Office of Research Sciences within the National Institute on Disability, Independent Living, and Rehabilitation Research (NIDILRR). Dr. Beatty's Federal experience includes the U.S. Senate Committee on Health, Education, Labor, and Pensions (HELP) and the Grants Management Advisory Council (GMAC) within the Administration for Community Living. He has co-authored twenty peer reviewed publications while at the National Rehabilitation Hospital Center for Health and Disability Research.



Debra Brucker, PhD

Research Associate Professor

Institute on Disability / UCED
University of New Hampshire
Durham, NH

debra.brucker@unh.edu

<https://researchondisability.org>

Dr. Debra Brucker uses national level survey data to measure the economic, health and social well-being of persons with disabilities. She has over 20 years of applied policy research experience and has held social and health policy research positions at academic institutions, research organizations, and state agencies. Her work has been published in numerous peer-reviewed journals including *Social Science Quarterly*, *Journal of Behavioral Health Services and Research*, and *Journal of Disability Policy Studies*.



Disability Statistics & Demographics
Rehabilitation Research & Training Center

Follow along at
#DisabilityCompendiumEvent



Photo

Speaker

Biography



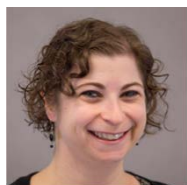
Michelle Dressner

Labor Economist

Office of Compensation and Working Conditions
Bureau of Labor Statistics

dressner.michelle@bls.gov

Michelle Dressner is a labor economist in the Office of Compensation and Working Conditions in the Survey Information and Publications branch. Her role is the team lead for the Occupational Requirements Survey (ORS), working with data analysis and dissemination. Prior to her position on the ORS, she worked on the Survey of Occupational Injuries and Illnesses (SOII), with a detail assignment researching a Household Survey of Occupational Injuries and Illnesses (HSOII) Pilot.



Stacie Feldman

Survey Researcher

Mathematica, Princeton, NJ

sfeldman@mathematica-mpr.com

www.mathematica.com

Stacie Feldman is a survey researcher in the disability area with fifteen years of experience conducting survey data collection in multiple modes. She specializes in collecting data from/about people with disabilities on topics such as employment, activities of daily living, accessibility, unmet social and health care needs, youth transition, and independent living. Other research interests include qualitative data collection and inclusive research practices.



Jason Fields, PhD

Senior Researcher

Survey of Income and Program Participation, Social Economic, and Housing Statistics Division,
US Census Bureau

Jason.m.fields@census.gov

https://www.census.gov/research/researchers/profile.php?cv_sub=alpa&cv_profile=3803

Jason M. Fields, PhD, MPH, is a demographer and the Senior Researcher for Demographic Programs and the Survey of Income and Program Participation (SIPP), establishing scientific objectives based on the needs of the Census Bureau and the external SIPP user community; establishing survey objectives; determining SIPP questionnaire content; and engaging the data user community and other stakeholders to identify evolving needs for data.



Photo

Speaker

Biography



Megan Henly, PhD

Research Assistant

Institute on Disability / UCED
University of New Hampshire
Durham, NH

megan.henly@unh.edu

<https://researchondisability.org>

For the last 18 years, Megan Henly, Ph.D., has worked in survey production (both small scale and large, nationally-representative data collection efforts) and statistical analysis in academia, federal government, and the non-profit sectors. As an analyst at the IOD, her work is focused on identifying and utilizing survey data sets that capture a representative picture of how people with disabilities are doing with respect to employment, health, and overall well-being. Dr. Henly seeks to identify unique methods of measuring these outcomes in a manner that contributes to existing academic research and that is also practical to policymakers. In addition, her work with StatsRRTC offers support to those who serve people with disabilities in accessing and interpreting current disability statistics.



Andrew J. Houtenville, PhD

Professor of Economics and
Research Director

Institute on Disability / UCED
University of New Hampshire
Durham, NH

Andrew.houtenville@unh.edu

<https://researchondisability.org>

Dr. Houtenville is extensively involved in disability statistics and employment policy research. He has published widely in the areas of disability statistics and economic status of people with disabilities. He is the Principle Investigator on the NIDILRR-funded Rehabilitation Research and Training Center on Disability Statistics and Demographics (StatsRRTC).



Allison Kolbe, PhD

ORISE Fellow

Office of Science and Data Policy,
Office of the Assist. Sec for
Planning & Evaluation
US Department of Health and
Human Services

Allison.kolbe@hhs.gov

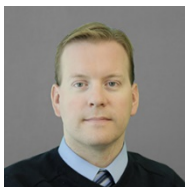
Allison Kolbe, Ph.D. is an ORISE Fellow in the U.S. Department of Health and Human Services, Office of the Assistant Secretary for Planning and Evaluation. Allison is a biologist by training and currently applies her expertise of data science techniques to health policy research, with a specific interest in social determinants of health and COVID-19 outcomes.



Photo

Speaker

Biography



David Mann, PhD

Senior Researcher

Mathematica, Princeton, NJ

DMann@mathematica-mpr.com

<https://www.mathematica.org/our-people/staff/david-mann>

David Mann, who joined Mathematica in 2011 has played a key role in projects examining employment and benefit receipt for people with disabilities, especially vocational rehabilitation customers, Supplemental Security Income (SSI) and Social Security Disability Insurance (SSDI) beneficiaries, and young adults with childhood onset disabilities. Mann helps oversee Mathematica's work for two Rehabilitation Research and Training Centers, which are funded by the NIDILRR to produce new knowledge that can improve the well-being of people with disabilities.



Edward O. Manyibe, PhD, CRC, LADC

Capacity Building Director and
Research Associate Professor

Langston University
Oklahoma City, OK

manyibe@langston.edu

Dr. Edward O. Manyibe, Ph.D., CRC, is the Capacity Building Director and Research Associate Professor at the Rehabilitation Research and Training Center (RRTC) on Research and Capacity Building for Minority Entities, Langston University. He is the current Research Committee Chair of the National Council on Rehabilitation Education (NCRE). His primary areas of research include Research Capacity Building, Rehabilitation Outcomes, and Disability Policy in Developing Countries.



Chris McLaren

Senior Economist

Office of Disability Employment
Policy

U.S. Department of Labor
Washington, DC

Mclaren.christopher@dol.gov

Christopher McLaren is a Senior Economist at the U.S Department of Labor's Office of Disability Employment Policy. His research focuses on stay-at-work/return-to-work policies aimed at helping newly ill and injured workers remain in the workforce and leveraging public data to identify opportunities to improve employment outcomes for people with disabilities.



Photo

Speaker

Biography



Kirstin Painter, PhD, LCSW
Program Specialist

Office of Research Sciences
National Institute on Disability,
Independent Living &
Rehabilitation Research

Administration for Community
Living US Dept of Health and
Human Services

Kirstin.Painter@acl.hhs.gov

Kirstin Painter, PhD, LCSW is a Program Specialist in the Office of Research Sciences with NIDILRR/ ACL/U.S. HSS. Dr. Painter has an extensive clinical, administrative, and research background in serious mental health problems, intellectual and developmental disabilities, and co-occurring disabilities. She has been the Principal Investigator on multiple research grants and contracts, has published numerous articles in peer-reviewed journals, presented at national and international research conferences, and co-authored a textbook on child and adolescent mental health.



Shreya Paul, PhD
Project Director

Institute on Disability / UCED
University of New Hampshire
Durham, NH

Shreya.paul@unh.edu

<https://researchondisability.org>

Shreya Paul is a Project Director at UNH's Institute on Disability and loves using data analytics to tell stories about disability policy. At IOD, Shreya's main focus is on collecting, analyzing and interpreting data to publish the Annual Disability Statistics Compendium and its supplement. She is also involved in doing research and publishing manuscripts on topics related to disability.



Kimberly Phillips, PhD
Research Assistant Professor

Institute on Disability / UCED
University of New Hampshire
Durham, NH

kimberly.phillips@unh.edu

www.iod.unh.edu

Dr. Phillips joined the IOD in 2010. She conducts primary and secondary data research, as well as evaluation and project direction for several grant-funded efforts. Presently, Dr. Phillips serves as Principal Investigator of the CDC-funded New Hampshire Disability & Public Health Project and Co-Principal Investigator of the NIDILRR-funded Disability Statistics and Demographics RRTC. She also leads research related to the Kessler Foundation National Employment & Disability Surveys.



Photo

Speaker

Biography



Marisa Rafal

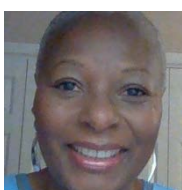
Project Research Specialist

Institute on Disability / UCED
University of New Hampshire
Durham, NH

marisa.rafal@unh.edu

<https://researchondisability.org>

Marisa Rafal received a Bachelor of Science degree in Human Development and Family Studies from the University of New Hampshire in 2019. She then participated in a year-long Social Policy fellowship at UNH's Institute on Disability, under the supervision of Dr. Deb Brucker and Dr. Megan Henly, while completing coursework toward a Master's of Public Policy and founding the New Hampshire Toy Library Network.



Shelley Reeves, MA

ADA National Network Program
Coordinator and Section 21
Program Coordinator

National Institute on Disability,
Independent Living, and
Rehabilitation Research
Washington, DC

Shelley.Reeves@acl.hhs.gov

Shelley Reeves is a Rehabilitation Program Specialist with the National Institute on Disability, Independent Living and Rehabilitation Research (NIDILRR). She works in the Office of Research Sciences where she has primary responsibility for NIDILRR's Americans with Disabilities Act (ADA) National Network Program and Section 21 Capacity-Building Program for Underserved Populations.



Amanda Reichard

Project Specialist

National Institute on Disability,
Independent Living, and
Rehabilitation Research
Washington, DC

amanda.reichard@acl.hhs.gov

<http://acl.gov>

Amanda Reichard, Ph.D., began working at NIDILRR as a project officer in 2016. Dr. Reichard has over 20 years of experience researching disability and health, wellness promotion, and health services. Using nationally representative survey data and Medicare and state Medicaid administrative claims data, she has examined health care access, health care utilization, public health surveillance, and disparities among people with disabilities of many types. She is passionate about health equity and mental health parity.



Photo

Speaker

Biography



Andre Washington

Research Assistant Professor &
Technical Coordinator

Langston University Rehabilitation
Research & Training Center
on Research and Capacity
Building for Minority Entities

Langston University
Oklahoma City, OK

andre.washington@langston.edu

Andre Washington, Ph.D., CRC is currently serving dual roles as a Co-Principal Investigator and Technical Assistance Coordinator at the LU-RRTC and Research Assistant Professor within the Rehabilitation Counseling Program. Dr. Washington is a Certified Rehabilitation Counselor (CRC) and have over 19 years of experience in vocational rehabilitation counseling as an advocate, practitioner, educator, researcher.



Julie D. Weeks, PhD

Chief, Aging and Chronic Disease
Statistics Branch

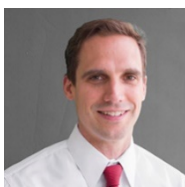
National Center for Health
Statistics

Centers for Disease Control &
Prevention
Hyattsville, MD

jweeks@cdc.gov

<https://www.cdc.gov/chronicdiseases/index.htm>

Julie Weeks, Ph.D. serves as the Chief of the Measures Research and Evaluation Research Branch in the Division of Analysis and Epidemiology. Dr. Weeks' research focuses on all aspects of disability and functioning, including measurement and analysis, and incorporating standard measures into both national and international data collections, and population aging. Her current work also includes leading the Quality of Life and Well-Being work group for DHHS' Healthy People initiative, as well as membership on both the Disability and Health and Older Adults work groups.



David Wittenburg, PhD

Director of Health Division,
Princeton

Disability Area Leader
Mathematica Policy Research
Princeton, NJ

dwittenburg@mathematica-mpr.com

<https://www.mathematica.org/our-focus-areas/health/disability>

David Wittenburg is an expert in leveraging data to inform policy development through the use of rigorous evaluation designs. He has worked on several large evaluation projects over the past 20 years for several federal agencies, where he has led research using a combination of survey, administrative, and qualitative data for the Social Security Administration, Health and Human Services, and Department of Labor. A focal point of this research has been to identify options to improve service delivery and enhance incentives that will allow people with disabilities to live independently.

